



NOVEMBER 2025

Below are some key pieces of information and events for the coming term;

DATES FOR YOUR DIARY

Monday 3rd November – School starts after holiday
Monday 10th November - Classes 1 & 2 to the Playhouse
Friday 14th November -Children In Need Charity Day
Tuesday 18th November -Children's Flu Vaccinations

Tuesday 2nd December 2025— The Book Fair is in school

Tuesday 9th December-FU & KS1 Christmas productions (PM)

Wednesday 10th December – FU & KS 1 Christmas productions (AM)

Wednesday 10th December -KS2 Performance (PM))

Thursday 11th December -KS2 Production (AM)

Monday 15th December -Christmas Parties

Tuesday 16th December – PANTO! (am)

Wednesday 17th December -Christmas Dinner and Christmas Jumper Day

Friday 19th December – Break Up for the holiday

Monday 5th January – Schools starts

PTA INFORMATION

Winter Disco is on Friday 28th November

Timings are as follows:

Reception and KS1

4pm - 5pm

KS2

5:15pm - 6:15pm



On **Friday 14th November**

We will be taking part in Children in Need

We are asking everyone in school to donate £1 and wear something brightly coloured or spotty!!

Let's get involved

The arrival of the new Polytunnel!



Greenfields are now the proud owners of a polytunnel to enhance our outdoor learning and gardening facilities.

The new polytunnel has been generously paid for by the PTA.

All the pupils, staff and governors at Greenfields would like to say a **HUGE** thank you to everyone who has contributed the fund-raising events organised by the PTA.

Bicycles & Scooters

Please be mindful if you or your child ride a bicycle and/or scooter to school.

You **must dismount**

& walk once you enter the school grounds to ensure the safety of others



A REMINDER

Please could we remind all parents to send any money, either for dinner or trips, into school in a sealed envelope with your child's name, class number and what the money is for clearly written on the front.

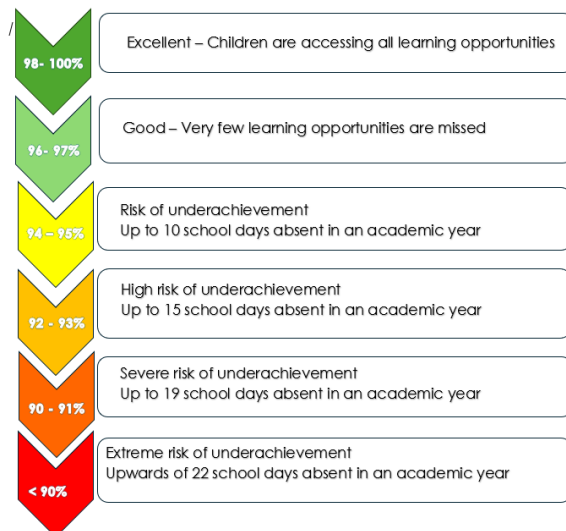
PLEASE NOTE THAT, UNFORTUNATELY, WE ARE UNABLE TO GIVE CHANGE.

ATTENDANCE AND PUNCTUALITY

We continue to take a whole-school approach to improving pupil attendance.

Greenfields Community School intends to maintain its high levels of attendance each year. Our target is to achieve better than 95% attendance daily and be amongst the best in the country.

Please see the school website for ALL update Attendance information.



We expect **ALL** of our children to be in school **EVERY DAY** and on time, ready to learn.

School starts officially at 8.50am (doors open at 8.45am and finishes at 3.20pm (3:10pm for the Foundation Unit)