

Greenfields Community School



PROSPECTUS 2025-26

گرین فیلڈز کمیونٹی سکول



Greenfields Community School



گرین فیلڈز کمیونٹی سکول

Address :

Greenfields Community School, Orange Gardens, The Meadows, Nottingham, NG2 2JE

Telephone :

(0115) 9153762

E-mail :

admin@greenfields.nottingham.sch.uk

Head Teacher :

Mrs Louise Maltby, B.ed. (Hons), M.A

Chairperson of Governing Body :

Ms Christine Atkinson

Type of school :

Greenfields Community School is a maintained community school which caters for children aged 3-11 years.

Website :

www.greenfields.nottingham.sch.uk

Introduction

Welcome to Greenfields Community School. We are pleased to have you with us and hope that you will be as happy here as we are. We are very proud of our school and the education we offer to our children in a busy but caring atmosphere.

This brochure aims to give you the basic information you need to know about our school whether your child has already been given a place or whether you are still deciding on your choice of school.

If, having read the brochure, you would like more information or would like to talk to us personally, please get in touch.

New parents are always welcome to visit the school and see the children at work and at play. Please telephone to make an appointment to be shown around.

The School

Greenfields Community School is situated in the heart of the Meadows area of Nottingham. It is one of three primary schools which serve this area of the inner city. The school opened in September 2005 following the amalgamation of the Arkwright and Meadows Primary Schools.

Situated between the Nottingham railway station and the River Trent, the Meadows area was widely redeveloped and consists of an extensive area of redeveloped housing and an area of original Victorian buildings. The catchment area of the school has been identified as an area of high social and economic deprivation and includes a community which is culturally rich and diverse. The area does suffer from high levels of unemployment and more than 35% of the children are entitled to free school meals.

Almost 60% of the school comes from minority ethnic backgrounds, the main ethnic group being Pakistani Muslim children. The school is extremely fortunate to have children from such a large variety of backgrounds. Altogether, more than thirty five languages are spoken within the school.



The school building is situated within its own grounds. It comprises a predominantly open plan building with a separate Key Stage One department adjacent to the main building. The Foundation Unit is situated in a building next door to the school and is attached to a Nottingham City Family Hub.

The number on role is 240. There are six classes in school which comprise single year-group classes. The Foundation Unit caters for Nursery and Reception children.

In December 2024 OFSTED completed an inspection of Greenfields. The Outcome was positive and the following comments were made in the report;

Pupils love coming to Greenfields Community School. It is a welcoming and inclusive place where pupils say they are 'heard and seen'. The school has a deep ethos of care for everyone it serves. Parents and carers confirm this.

The school is aspirational for all of its pupils. Many pupils achieve well, particularly in the core subjects of English and mathematics. They study a wide range of interesting topics and read books that enthuse them to learn new and ambitious vocabulary.

Pupils enjoy the enriching experiences that the school provides. These include residential trips, visiting experts and learning outdoors. Links to a university raise pupils' aspirations. Pupils appreciate the many musical and sporting opportunities. These activities help to nurture their interests and talents.

Greenfields is a very successful school. It has consistently provided a high standard of education for the community achieving both 'Good' and 'Outstanding' judgements from previous OFSTED inspections.

We are very proud of the the work we do to support children and the local community and continue to aim high everyday.

The full OFSTED report can be found here : <https://reports.ofsted.gov.uk/provider/21/134842>



School Hours

Breakfast Club – 8.15am – 8.40am
Classroom Doors open – 8.45am
School Starts – 8.50am
Register Completed – 9am
Morning break – K.S1-10.40am-10.55am
K.S2- 10.30am – 10.45am
Lunchtime – Nursery – 11.30 – 12.30pm
Reception – 11.40 – 12.45pm
K.S1 – 11.45am – 12.45pm
K.S2 – 12.00 – 12.45pm
Afternoon break – K.S1- 2.15pm - 2.30pm
K.S 2 – 2.00pm – 2.10pm
School Ends – 3.20pm

SCHOOL VISION

At Greenfields, we recognise the importance of achieving the highest possible standards in teaching and learning. To support this, we have very clear aims and a vision for the future.

These aims are :

The driving force behind all that happens at Greenfields Community School is the shared aim of **Care**. We are committed to making it our mission to ensure that children leave their Primary school being individuals who;

are **C**onfident, can **A**chieve, be **R**esilient and **E**quipped for life.

We believe that by following the school values of

Be kind, be curious and be your best

through everything we do, the children will reach their potential and be their best selves. In order to achieve this, we aspire to provide a stimulating, challenging and creative curriculum in a safe environment with inclusivity and equality at its heart.

We aim to fully develop any interests or talents that our children have, through the curriculum which values all subjects, the Arts and Sports. We aim to provide many enrichment experiences that create lasting memories that will shape their future and expand their horizons.

At Greenfields Community school we are committed to caring for children, families, the school community, the Meadows community and beyond.

STAFFING - SEPTEMBER 2025

Teaching & Teaching Assistant Staff

- | | |
|--|---|
| • Headteacher | Louise Maltby |
| • AHT - EYFS & Numeracy Lead/Nursery | Clare Thomas |
| • Reception Teacher | Charlotte Withnall (0.8) (Rhianna Wames: Mat Leave) |
| • AHT - KS1 Lead & Senco/Class 1 | Sarah Simpson (0.9) |
| • Class 2 teacher | Hattie Fellows (0.8) |
| • Class 3 teacher | Zeenat Yasin (0.4)/Samantha Clarke (0.6) |
| • Class 4 teacher | Morgan Foyle |
| • Class 5 teacher | Lizzie McDonnell |
| • AHT – KS2 & Literacy Lead/Class 6 | Danielle Siriboe |
| • Support Teacher (KS1)/PE Teacher | Heidi Hunt (0.8) |
| • Support Teacher (KS2) | Lyndsey Howard(0.6) |
| • Support Teacher (KS2) | Jude Crow (0.4) |
| • PPA/EAL/MFL Teacher | Carol Burnell |
| • Music Teacher | Catrin Jones (0.4) |
| • Counsellor | Jay Laister (0.6) |
| • Gardener | Isabella Dubik (Allotment Education)(0.2) |
| • Forest Schools Teacher/CA | Claire Simpson (0.4) |
| • Teaching Assistant (Foundation) | Jayne Fletcher (0.8) |
| • Teaching Assistant (Foundation) | Nicola Dyas |
| • Teaching Assistant (KS1) | Shabana Rasul |
| • Teaching Assistant (KS1) | Alison Collington (0.6) |
| • Teaching Assistant (KS1) | Daisy Crook (0.8) |
| • Teaching Assistant (KS2) | Hitomi Boyes (0.8) |
| • Teaching Assistant (KS2) | Judit Athavan |
| • Teaching Assistant (KS2)/Learning Mentor | Jane Glover (0.5) |
| • Teaching Assistant (KS2) | Milli Perkins |

Office Staff

- | | |
|--|-----------------|
| • School Business Manager/GDPR | Aimie Rawson |
| • School Administrative Officer/DSL | Angela O'Connor |
| • School Admin Assistant/Attendance Lead | Geraldine Long |

Additional Staff

- | | |
|--|-----------------|
| • Site Manager | Paul Sansome |
| • Lunchtime Supervisor/Care Assistant | Anne Elcock |
| • Lunchtime Supervisor/ Breakfast Club | Sally Langley |
| • EYFS Support Staff (CA)/Lunchclub | Tabassum Ahmed |
| • EYFS Support Staff (CA)/MDS | Leanne Faulkner |
| • Support Staff (CA) | Leander Curt |
| • Support Staff (CA) | Miriam Bilardi |
| • Support Staff (CA) | Serena Hussain |
| • Support Staff (CA) | Stacie Edwards |
| • Support Staff (CA) | Stacey Green |
| • Support Staff (CA)/Breakfast Club | Balquees Begum |
| • Senior Mid-Day Supervisor | Kane Pike |
| • Mid-Day Supervisor | Kath Astill |
| • Mid-Day Supervisor | Fatima Sulaiman |
| • Mid-Day Supervisor | Bev Hopps |
| • Mid-Day Supervisor | Mahfooz Begum |

Kitchen & Cleaning Staff

- | | |
|---------------------|-----------------|
| • Cook | Laura Boothby |
| • Kitchen Assistant | Shannon Nangle |
| • Kitchen Assistant | Shakira Jackson |
| • Cleaner | Asha Idris |
| • Cleaner | Bridie Mulhern |

Governors

Chair of Governors : Ms Christine Atkinson

Clerk to the Governors : Mrs Karen Sheard
c/o The Governors Section
Loxley House
Station Street
Nottingham
NG2 3NG

The following Governors are Co-opted Governors :

Ms Christine Atkinson (Chair)
Miss Daisy Ford
Ms Lucie Whitfield
Mrs Gillian Roberts

The following Governors have been elected as Parent Governors :

Mr Ryan Maguire
Mrs Mel Ibrahim (Vice Chair)

The following Governors are Staff Governors :

Mrs Clare Thomas
Miss Morgan Foyle
Mrs Serena Hussain

In addition, the Head Teacher is a member of the Governing Body in her own right and her term of office is without restriction.

Organisation of The Curriculum

The Governors have adopted the government's educational aims as identified in its National Curriculum Handbook for Primary Teachers in England (1999). This sets out :

- A clear, full and statutory entitlement to learning for all pupils
- The content of what will be taught
- Attainment targets for learning and
- The assessment and reporting of performance

Therefore the Governors seek, through teaching across the curriculum, to ensure that all pupils are given the chance to succeed, whatever their individual needs. We aim to ensure that all pupils :

- Develop from an early age the essential literacy and numeracy skills they need to learn
- Are provided with a guaranteed full entitlement to learning
- Have their creativity fostered and
- Are endowed with a joy and commitment to learning that will last a lifetime.

The school believes that the curriculum should concern itself with the development of the whole child and that education should prepare children for an adult life.

We aim to provide our children with :

- The basic language and mathematical skills and the ability to use these effectively for communication, learning and pleasure. All the children have regular Art, Music, Drama, P.E. as well as swimming through Portland Leisure Centre.
- Knowledge of the changing world, acquired through History, Geography, Science, R.E and Computing which are often inter-related.
- An awareness of others and respect for property and persons.
- Self-confidence and self-reliance.
- A wide experience of outside education, including Forest Schools education and gardening.

The Curriculum

At Greenfields, our curriculum is designed to inspire, challenge, and support every child to achieve their full potential. Rooted in our school values and tailored to the needs of our community, it provides a broad and balanced education that nurtures curiosity, creativity, and a lifelong love of learning.

We aim to:

- Deliver a curriculum that is **ambitious, inclusive**, and **engaging**
- Ensure all pupils develop strong foundations in **literacy, numeracy**, and **critical thinking**
- Promote **personal development, wellbeing**, and **global citizenship**
- Provide opportunities for pupils to explore their interests and talents through a rich variety of subjects and experiences

Whole school Curriculum Map	Autumn 1 History	Autumn 2 Geography	Spring 1 History	Spring 2 Geography	Summer 1 History	Summer 2 Geography
Foundation						
Reception						
Year One	Me and my family	The place I live	Toys from the past	The country I live in. (The UK)	Florence Nightingale and Mary Seacole	The Sea
Year Two	Planes, trains and automobiles.	The world we live in.	Famous Explorers Christopher Columbus Mathew Henson Neil Armstrong	From London to Deli	The Great Fire of London	The weather
Year Three	Ancient Egypt	The UK	Prehistoric Britain	Settlements	Roman Britain	Coasts and Rivers
Year Four	Anglo Saxons and Scots	North and South America	Nottingham Castle	Brazil	Ancient Maya	Rainforests
Year Five	The Vikings	Our planet	The Industrial Revolution in Nottingham	Mountains, Earthquakes and Volcanoes	The Suffragettes	The Peak District (OS Maps)
Year Six	Ancient Greece	Europe	WW2	From Nottingham to Athens	The Civil Rights movement	Climate Change

Religious Education

The school is not affiliated with any particular religious denomination. Religious Education is provided in accordance with the L.A.'s agreed syllabus. Serving a mixed and varied catchment area offers us the opportunity to ensure that, whilst remaining "broadly Christian" in values, the R.E. curriculum reflects this cultural diversity. The school has a very strong commitment to celebrating cultural diversity and opposing racism.

The school will make arrangements for parents to exercise their right of withdrawal of their children from religious worship in accordance with Section 9 of the 1988 Education Act, should they request this.

Outside Education

At Greenfields, we are committed to providing outside education.

We have a gardener, who works with us a day per week and who works with the children each Wednesday. Raised beds enable the children to grow fruit and vegetables, all of which are used in cooking sessions across the school.



We pride ourselves on our school grounds and have developed the school site to allow and encourage outside education through using the kitchen garden, wildlife garden, copse, wild flower meadow and Forest Schools site.

We also have a teacher who is fully trained in Forest Schools,. This means that all of the children from Nursery to Year 6 undergo the Forest Schools programme throughout. Through Forest Schools, children learn invaluable social skills and the confidence to try out new ideas and approaches.

Health Education

We teach and encourage healthy and hygienic living habits throughout the school. Our aspects of health education are taught through Science and P.H.S.E. work. At the present time, the school teaches a programme of sex education. From time to time, the Governors may review this decision and you will be consulted should you wish to change this.

We encourage healthy eating via the provision of fresh fruit and vegetables for all of our infant children and through the use of the Life Education Caravan. Our involvement with the Food For Life Partnership has seen us dramatically improve our school meals. Now, more than 30% of our food is organic and 70% is locally sourced. Where possible, food grown on school premises in each class's raised beds is used within cooking.

The school has been awarded the Food For Life Gold Award and Nottingham City Catering have also been awarded the Food For Life Gold Award for their work in supporting the school. We have also been awarded the City of Nottingham Healthy Schools Award.

Where possible, we try to use visits both to enhance the curriculum and to connect learning to the real world, expanding the children's experience. We put a strong emphasis on enriching this curriculum through the provision of after school activities.

In 2019, the school was awarded the Wellbeing Award for Schools in recognition of its commitment to support and developing the emotional wellbeing of its children and staff.



Relationships and Sex Education

Greenfields Governors and staff accept the Local Authority's curriculum guidelines for Relationships and Sex Education (RSE). Work is done through sensitive discussion and topic work appropriate to the age of the children.

At Upper Key Stage Two, parents are invited to view and materials or resources beforehand. We welcome parents' comments and discuss their concerns.

SEND Provision

We are committed to ensuring that pupils with Special Educational Needs and Disabilities (SEND) are fully included in all aspects of school life. Our curriculum is adapted to meet individual needs, with high-quality teaching and targeted support that enables every child to access learning and make progress.

We work closely with families, external agencies, and our dedicated SEND team to:

- Identify needs early and accurately
- Provide appropriate interventions and resources
- Monitor progress and adjust provision as needed
- Foster independence, confidence, and a sense of belonging

Our inclusive approach ensures that all pupils, regardless of ability or background, are supported to thrive academically, socially, and emotionally.

We regularly review and adapt our curriculum to reflect current research, national expectations, and the evolving needs of our pupils

The Early Years Foundation Stage (EYFS) applies to children from birth to the end of the reception year. In our school, children join us, part time, when they are three and then twenty places are offered full-time to those who will be four. They then start full time school in the September of the year in which they are five, the 'Reception' year.

At Greenfields Community School we recognise that every child is a competent learner who can be resilient, capable, confident and self-assured. We recognise that children develop in individual ways, at varying rates. Children's attitudes and dispositions to learning are influenced by feedback from others; we use praise and encouragement, as well as celebration and rewards, to encourage children to develop a positive attitude to learning.

Special Educational Needs Policy

We recognise that all children have their own individual needs and abilities at different times during their school career. We cater for these needs in a variety of ways. Teaching Assistants and Care Assistants provide extra support in the classroom and will work with individuals or small groups of children on specific programmes.

This may mean that occasionally children's work will be adapted in some way according to their need. It may mean a little extra help from an adult, for example a Teaching Assistant. It may mean working in a small group. Whatever the need, we will try to adapt work to suit the needs of that pupil. Sometimes we may ask you to help your child at home. Sometimes school will get advice from outside agencies when required.

It is always our policy to inform parents whose children require additional support and involve them in assisting their child in accordance with the Code of Practice. We may draw up an Individual Support Plan for a child which will be reviewed on a regular basis.



Our Special Needs Co-ordinator (SENCO), Counsellor and Learning Mentor consult with parents, teachers, pupils and outside agencies to meet the needs of individual pupils.

Our Special Needs Policy is available at school, or on the school website, should you wish to read it.

Disability Statement

We are very proud of our commitment to inclusion and everybody being welcome at Greenfields. We know that all children develop at their own pace and in their own time. All children have their own strengths and weaknesses and some children need more support to learn new skills and to play with the other children. We are keen to include all children in our school and to make them feel happy and welcome.

In previous years, we have needed to upgrade our premises in order to accommodate disabled children or adults. The school is fully accessible to disabled visitors and there is a Disability Access Policy available in school should anybody wish to see one.

Organisation of Education : The Foundation Unit

The School has a Foundation Unit which provides learning opportunities for Nursery and Reception age children. As well as providing education from three to five, the Unit also provides an effective transition into the main school at the beginning of Year 1.

Nursery children are admitted initially on a part-time basis for an afternoon session, starting full-time at the beginning of the year in which they are four and then joining the Reception class (if they are allocated a place) in the year in which they are five. The Unit is staffed by two teachers, two Teaching Assistants and several Care Assistants, according to the needs of the children. The children are based in the Foundation Unit for all their early years education. There are thirty Nursery places available and thirty Reception places.



Settling in

Some children visit our nursery and want to stay on their own, straight away. Other children take a little longer and may get upset when they are left. Please do not worry if your child is upset. We are completely used to this and we will make sure that we spend a little extra time with your child.

It helps us if children can be toilet trained before they start in our Foundation Unit. However, we do recognise that all children are different and some children may not be ready for this, just yet. If your child regularly has accidents please could you send in some spare clothes for them, as we often run out! If your child wears nappies or pull ups please could you send spare ones in with some wipes so that we are able to help them. Our afternoon Nursery session starts at 12.05pm and ends at 3.15pm

Lunch Club

When nursery aged children stay for a full day in the Unit, they will stay at our lunch club. This session runs from 11.25 – 11:55pm. The children eat their lunch (provided by parents) and then have a playtime supervised by three Midday Supervisors.

The lunch club is run by Anne Elcock, Sally Langley and Tabassum Ahmed who are midday supervisors. The children have a lovely time and they enjoy showing each other what they are eating. Our school is part of the Healthy Schools initiative and so we encourage the children to bring healthy food into school, for their lunch. We would like the children to bring in fresh fruit, raisins, yoghurt, bread etc into school rather than fizzy drinks, sweets and crisps. The children in the Reception class then play on the Key Stage 1 playground to help get them used to the staff and surroundings there.

All of the children in the Unit will have a drink of milk or water and a piece of fruit, every day. The milk is free until the term in which your child is 5 and then you will need to pay for it at the school office.

Daily Routines in the Foundation Unit

The school day starts at 8:50am, with the doors opening at 8:45am. When the children arrive in the morning/afternoon, they sit on the carpet while the register is taken.

The school day starts promptly at 8.50am so please ensure that your child arrives promptly. We have structured phonics, English and maths sessions for both Nursery and Reception children in the morning. Children have an opportunity to play outside during both the morning and afternoon. The school day ends at 3.15pm for all Nursery children. .




Illness

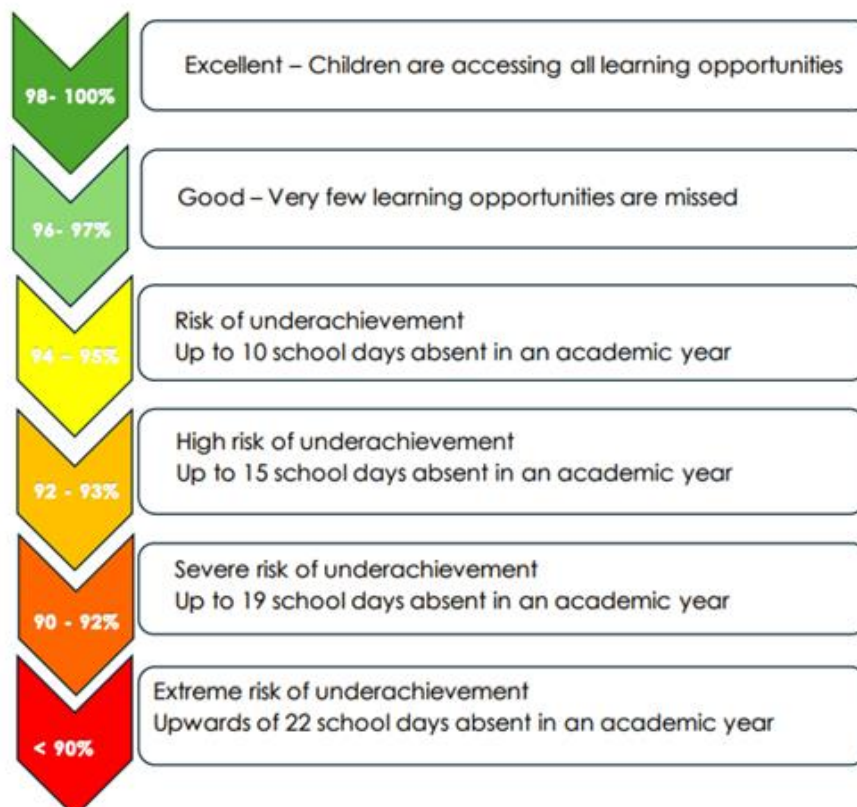
If your child is really unwell, please keep them at home. Please could you phone the school office (0115 9153762) on the morning that they are going to be off.

If your child has sickness or diarrhoea please keep them off school for 48 hours after their last attack as these illnesses can spread very quickly in young children.

Illness & Absence

On occasions, your child might feel unwell, and it can be challenging to know if your child can attend school or should stay at home. Please use the following guide to help decide. Always remember to inform school on the first and each day of absence. This can be done via telephone call, text or through the Arbor app.

When to come to school	When to come to school - but inform us	When to stay at home
<p>Please send your child to school if they have any of the following:</p> <ul style="list-style-type: none"> • Sore throat • Cold • Cough • Feeling tired • Hay fever • Achy or sore limbs  <p>Children can still take part in learning even if experiencing the above. Please give them medicine at the start of the day if needed.</p> <p>Always ensure your child has a water bottle and tissues.</p> <p>We will always contact you if your child is ill during the school day.</p>	<p>Please send your child to school but inform us if they have any of the following:</p> <ul style="list-style-type: none"> • Headache • Feeling sick • <u>Stomach ache</u> • <u>Ear ache</u> • Toothache • Experiencing feelings of anxiety • Twisted, sprained or broken limbs  <p>Children can still take part in learning even if experiencing the above. Please give them medicine at the start of the day if needed.</p> <p>We have highly skilled staff in school that can support children with anxiety and would rather support from the start so the feelings don't snowball into something bigger.</p> <p>Adaptations and risk assessments will be put in place for broken limbs.</p>	<p>Unfortunately, there are some occasions when your child will be too unwell to attend school. Please keep your child at home if experiencing any of the following:</p> <ul style="list-style-type: none"> • Temperature over 38* • Sickness and diarrhoea • Contagious illness (chicken pox, impetigo, measles) • Operations / medical treatments  <p>Medical evidence should be provided to school to ensure the absence is authorised. You must inform the school office if your child is unable to attend school on the first day of absence and each following day of absence. Please endeavour to inform school first thing in the morning if your child is not going to be in school.</p>



If your child is taken ill at school, we will make every effort to get in touch with you. It is therefore vital that we have up to date contact numbers.

Classes, all of which are of mixed sex and ability, are organised as follows :

	<i>Year Group</i>	<i>No. children</i>	<i>Total</i>
<i>Foundation Unit Mrs Thomas Mrs Withnall/Mis Warnes</i>	Nursery 1	10 (P/T)	60
	Nursery 2	20 (F/T)	
	Reception	30 (F/T)	
<i>Class 1 Mrs Simpson</i>	Year 1	30	30
<i>Class 2 Miss Fellows/Mrs Burnell</i>	Year 2	30	30
<i>Class 3 Mrs Yasin/Miss Clarke</i>	Year 3	30	30
<i>Class 4 Miss Foyle</i>	Year 4	30	30
<i>Class 5 Miss McDonnell</i>	Year 5	30	30
<i>Class 6 Miss Siriboe/Mrs Howard</i>	Year 6	30	30

Teaching Time

During a normal school week of twenty-seven hours and thirty minutes (excluding lunch breaks), the time spent on teaching is 23.5 hours.

The Care of Pupils

The main aim of all staff is to ensure the safety and welfare of every child.

In addition, the ethos of the school encourages a caring attitude not only between adult and child but between child and child.

The class teacher is primarily responsible for the care of the children in his/her class and any problems or anxieties concerning a child should be referred to them in the first instance.

The Head Teacher is responsible for all children in the school and is eager to see that they are able to derive maximum benefit from the opportunities which we provide for their education. For this reason, any medical or home circumstances likely to adversely affect a child's work should be brought to the Head Teacher's notice – this information will be treated in the strictest confidence.

Parents are requested not to send children to school before 8:45am. Teachers are on duty for ten minutes before school and during morning and afternoon breaks. The Senior Mid Day Supervisor and her assistants share the supervision of children at lunchtimes.

Safeguarding Children

Every school in Nottingham is required to follow a set of procedures in cases of suspected child abuse. Headteachers are required to refer their concerns to the Children's Services Department for further investigation so that children at risk can be identified quickly.

This procedure is intended to protect children from harm. When a school refers a concern about a pupil, it is not accusing the parents, but requesting that further investigation takes place to establish whether a child is at risk. It is normal practice to inform parents and carers that a referral is to take place.

Promoting Positive Behaviour

We expect our children to behave in a considerate and responsible manner towards other children and adults at all times.

We have a positive discipline policy in school which rewards good work and behaviour with "credits" systems, 'Outstanding' stickers, class and whole-school certificates and rewards in Celebration Assemblies.

Discipline in school revolves around six simple school rules which the children have formulated with the staff and which are consistently reinforced during Assemblies. There is also a Dinnertime Code of Conduct which all children are expected to stick to.

We endeavour to keep parents informed of their child's behaviour at all times, both positive and negative. The ethos of the school provides that children should be able to work and play without disruption from others. It is expected that parents will help to promote this ethos by encouraging their children to maintain the school's standards.

We also have a "Home-School Agreement" which we ask parents to sign on starting in school.

THE GREENFIELDS LEARNING PROJECT

Greenfields is also very proud to have the Greenfields Learning Project which identifies the learning behaviours that we are developing in the children.



School Uniform

We encourage all of our children to wear the school uniform at all times to help develop a positive image for the school.

School Uniform

Pale Blue blouse or polo shirt
Pale blue polo shirt or T-shirt
Dark Grey jumper, sweatshirt or cardigan
Grey or Black skirt or trousers
Grey shalwar kameez
Pale blue and white Summer dress
Black shoes

In the Foundation Unit, we expect all Reception children to wear their school uniform every day, although not necessarily the Nursery age children. But, if parents want them to, that's fine with us.

Parents are also asked to provide suitable kit for P.E., games and swimming. We ask the children to wear black shorts, track suit bottoms or leggings and a white polo or T-shirt for P.E.

Wearing jewellery is discouraged with the exception of watches and ear studs, though these must be removed for swimming and P.E. for health and safety reasons.

For swimming, children should bring a swimming costume or trunks and a towel. Children should not be wearing longer "Bermuda" style shorts as these are not allowed in the pool.

Parents can now purchase our school uniform online from 'Just Schoolwear'. Please go to www.just-schoolwear.co.uk and enter 'Greenfields Community School' into the search bar. Book Bags are still available from the office for £5.00 and water bottles for £2.00.



School Lunches

Dinners are served in the Dining Room starting at 11:40 for the Reception children with the rest of the school following on and finish at 12:45 when the afternoon session starts.

Children have a choice of a hot meal every day with the additional option of vegetarian and Halal dishes. They also have access to the salad bar where all children are encouraged to try the variety of options available.

We also offer a baguette option for the children which comprises a baguette, water, fruit and vegetable selection and a biscuit. The choices of fillings are cheese, tuna, ham or egg.

All Reception and Key Stage One children are entitled to the Government's offer of free school meals again this year.

We are also able to offer a hot meal to our full-time Nursery children at just **£2.65** per day.

For children in Classes 3, 4, 5 and 6 meals are now priced at **£2.90** per day.

Don't forget that too, that, as a Food For Life Gold Award School, our meals are very healthy – 30% of our food is organic and 70% is locally sourced.

As a "Healthy School", we also try and ensure that your child has healthy food for their lunch, e.g. : sandwiches, vegetables, fresh or dried fruit, pitta bread, pasta, rice, juice, etc. Please do not send in any sweets, crisps or chocolate.

We encourage the children to drink water throughout the school day and we ask the children not to bring in any juice, fruit juice, smoothies, fizzy drinks or flavoured water.

All dinner monies **MUST** be paid weekly on a Monday morning in a sealed envelope with your child's name and class number clearly marked on the front.

All monies must be in a sealed envelope with your child's name, class and 'Dinner Money' written on the front.

Online Payment System

Parents/carers now have the option to pay online via Arbor's free parent portal and app. Please see the attached help sheet to help you log in and get started.

We hope that many of you will take up and enjoy using the new system and if you have any further questions or require any further information then please speak to either Mrs Rawson, Mrs O'Connor or Mrs Long in the school office.

If you are entitled to Free School Meals, please make sure that you have applied for these.

Don't forget that all Reception, Year 1 and Year 2 children get a free meal every day as part of the Government's Universal Infant Free School Meals scheme.

We also have a tuck shop which offers healthy snacks at playtime to children in Key Stage Two.

I would also like to remind you that we do not allow the children to give out lollipops or sweets containing gelatine, on their birthdays.

School Holiday Dates

The dates of school terms and half term holidays for the 2025/26 school year are shown in detail at the end of this prospectus and on the website.

The School Fund

In addition to money provided by the LA, there is a school fund which is managed by the Head Teacher and which consists of donations and other incomes raised in a variety of ways, the purpose of which is to benefit the pupils by the provision of facilities, equipment, activities and financial assistance which cannot be made available for whatever reason from monies provided by the LA.

Homework and Parents' Evenings

Written reports on children's progress are sent to parents in the Summer term.

Homework is set by the teacher in line with the school Homework Policy. We value your help in ensuring that your child completes their homework. We ask that every child in school reads at home for at least twenty minutes per night and that this is recorded within the child's Reading Diary. For older children, this time is extended to thirty minutes per night.

Attendance

Regular attendance at school is vital to your child's education. If your child is absent from school, please telephone or send a written note in explanation of the absence.

We are seeking to have no unauthorised absences. The target for every child is **96%** attendance.

School starts at 8:50am. For children in Key Stage One, the classroom doors will be open from 8:45am for you to drop your children off there – please feel free to come in and read with the children first thing in the morning. For Key Stage Two children (Classes 3, 4, 5 and 6), the whistle is blown on the playground at 8:50am.

Please remember as well that the gates into school from Bunbury Street and the main entrance gates are locked at 9:00. If you arrive after that time, please buzz through to the office.

School finishes at 3:20pm and we ask parents to pick up their children from outside their classrooms.

The Foundation Unit starts at 8:50am and finishes at 3:15pm. For part-time Nursery aged children, afternoon sessions are from 12:05pm until 3:10pm. (or 12:10pm til 3:10pm if attending lunchtime sessions.)

For full-time Foundation and Reception children, the school day is from 8:50am until 3:20pm.

As you will also remember, children should not be taking time off school during term-times. Under Government guidance, absence from school is only allowed under "exceptional circumstances" and parents must fill in Term Time Absence forms available from the office beforehand to be authorised. We work very closely with an Educational Welfare Officer in following up any absences from school. All of the children should be in school every day. Absences such as holidays, weddings, shopping trips, etc. are **NOT** allowed.

Please be aware, that you may be fined for unauthorised absence from school.

Admission Arrangements

Community schools in Nottingham are the ones run by Nottingham City Council. This means that the Council is responsible for offering or refusing places at these schools.

To find out more about admission arrangements, please visit Nottingham City Council's website:

[School Admissions - Nottingham City Council](#)

All applications are done online using the link above. You can apply for a Primary, Infant or Junior place before January 15th each year.

Visiting School

Parents are welcome to visit the school at any time. We hold two parent consultation evenings during the year, usually in the Autumn and Spring terms. Parents are invited to special assemblies and occasions in school. We hold an Open Afternoon each year.

If you have any worries or concerns about your child's education, please come and talk to your child's class teacher or the Head so that we can help.



Disclaimer

Although the information contained in this brochure was correct in relation to the school year 2025/26 at the time of printing, it should not be assumed that there will be no change affecting either the arrangements generally described in the brochure or in any particular part of them before the start of or during the school year in question or in relation to subsequent school years.

Nottingham City Council

School terms and holiday calendar – 2025/26

AUGUST 2025						SEPTEMBER 2025						OCTOBER 2025					
M		4	11	18	25	M	1	8	15	22	29	M		6	13	20	27
T		5	12	19	26	T	2	9	16	23	30	T		7	14	21	28
W		6	13	20	27	W	3	10	17	24	W	1	8	15	22	29	
T		7	14	21	28	T	4	11	18	25	T	2	9	16	23	30	
F	1	8	15	22	29	F	5	12	19	26	F	3	10	17	24	31	
S	2	9	16	23	30	S	6	13	20	27	S	4	11	18	25		
S	3	10	17	24	31	S	7	14	21	28	S	5	12	19	26		

NOVEMBER 2025						DECEMBER 2025						JANUARY 2026					
M		3	10	17	24	M	1	8	15	22	29	M		5	12	19	26
T		4	11	18	25	T	2	9	16	23	30	T		6	13	20	27
W		5	12	19	26	W	3	10	17	24	31	W		7	14	21	28
T		6	13	20	27	T	4	11	18	25	T	1	8	15	22	29	
F		7	14	21	28	F	5	12	19	26	F	2	9	16	23	30	
S	1	8	15	22	29	S	6	13	20	27	S	3	10	17	24	31	
S	2	9	16	23	30	S	7	14	21	28	S	4	11	18	25		

FEBRUARY 2026						MARCH 2026						APRIL 2026						
M		2	9	16	23	M		2	9	16	23	30	M		6	13	20	27
T		3	10	17	24	T		3	10	17	24	31	T		7	14	21	28
W		4	11	18	25	W		4	11	18	25	W	1	8	15	22	29	
T		5	12	19	26	T		5	12	19	26	T	2	9	16	23	30	
F		6	13	20	27	F		6	13	20	27	F	3	10	17	24		
S		7	14	21	28	S		7	14	21	28	S	4	11	18	25		
S	1	8	15	22		S	1	8	15	22	29	S	5	12	19	26		

MAY 2026						JUNE 2026						JULY 2026					
M		4	11	18	25	M	1	8	15	22	29	M		6	13	20	27
T		5	12	19	26	T	2	9	16	23	30	T		7	14	21	28
W		6	13	20	27	W	3	10	17	24	W	1	8	15	22	29	
T		7	14	21	28	T	4	11	18	25	T	2	9	16	23	30	
F	1	8	15	22	29	F	5	12	19	26	F	3	10	17	24	31	
S	2	9	16	23	30	S	6	13	20	27	S	4	11	18	25		
S	3	10	17	24	31	S	7	14	21	28	S	5	12	19	26		

AUGUST 2026						
M		3	10	17	24	31
T		4	11	18	25	
W		5	12	19	26	
T		6	13	20	27	
F		7	14	21	28	
S	1	8	15	22	29	
S	2	9	16	23	30	